

## Vista Setup – How to run the program successfully

Keywords: Vista; setup; windows; UAC; auto; autotuning; install; problem; won't; operating; system; problem; control; user; XP

### Introduction (Please Read):

This document will walk you through the steps needed to setup your Windows Vista Operating System to work in conjunction with the program. To Setup Vista to work with the program you must make a few setting changes to your operating system. The three simple tasks covered include:

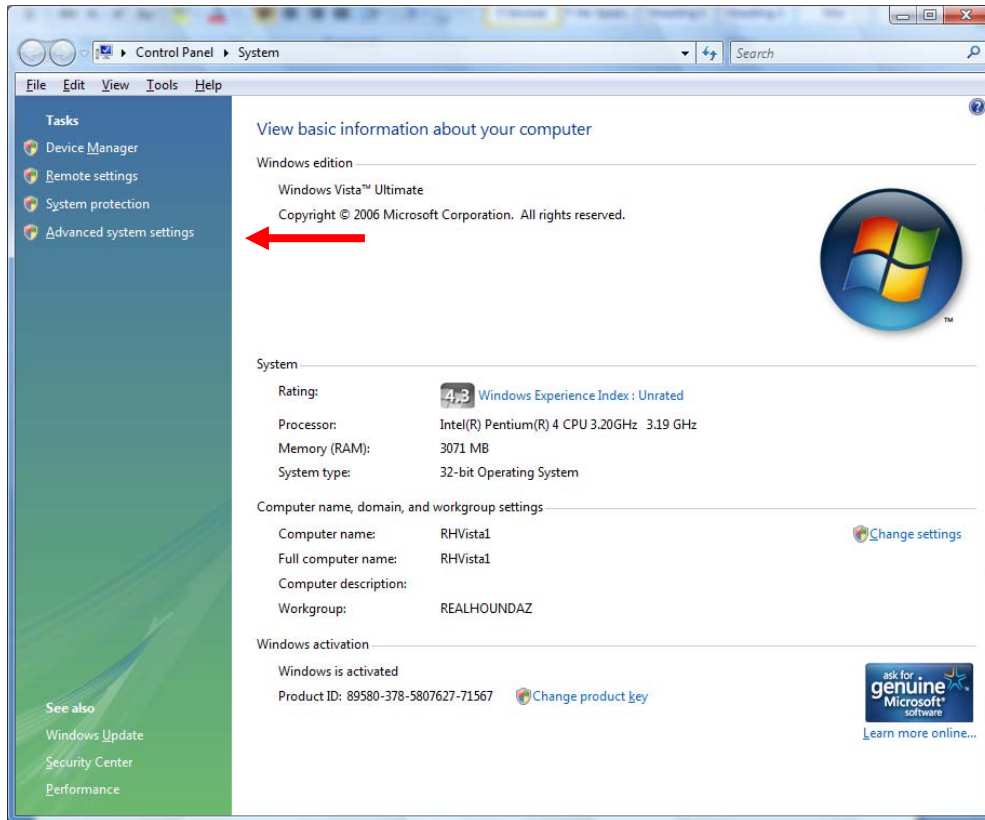
**Part 1 – Turn on Data Execution Prevention (DEP) for essential Windows Programs and Services only**

**Part 2 – Turn off User Account Control (UAC)**

**Part 3 – Disable autotuning with Internet Explorer 7 on Vista to improve networking functionality**

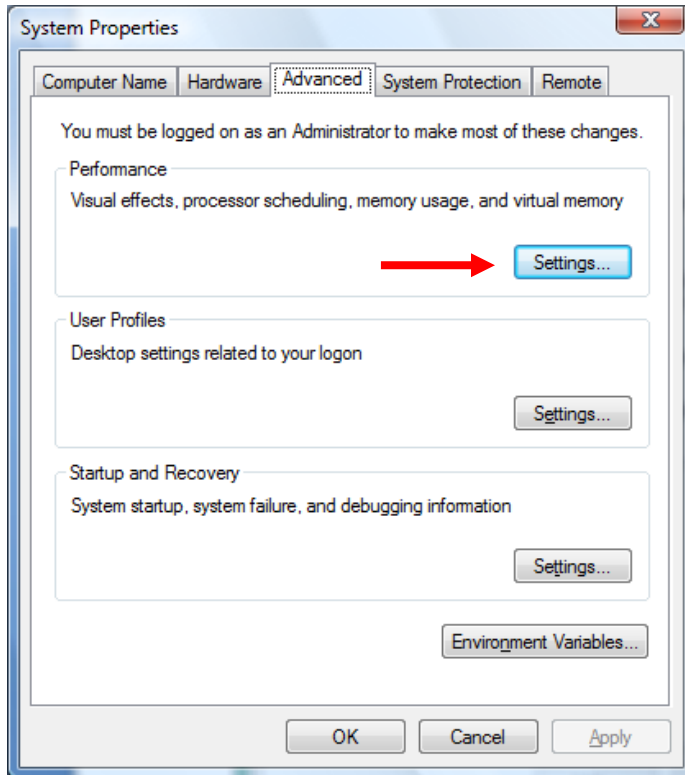
### Part 1: Turn on Data Execution Prevention (DEP) for essential Windows Programs and Services only

**Step 1** – Go to the System screen. This can be done by one of two ways: You can either right click on the “Computer” icon on your desktop, or you can go to your start menu and click on “Control Panel”. Once the control panel is open, double click on “System.” Either way will bring up a screen similar to below.



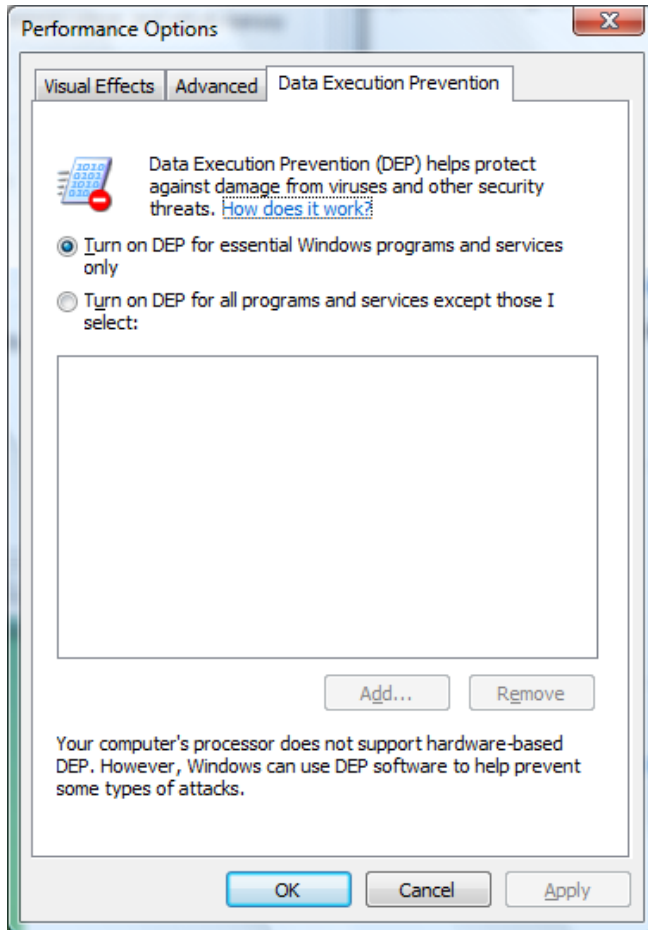
**Step 2** - Once on this screen click on “Advanced system settings.” This will bring up the “System Properties” window. Notice that it opened to the “Advanced” tab.

**Step 3** – Under the performance section of this window click on the settings button. This will open another window for Performance Options.



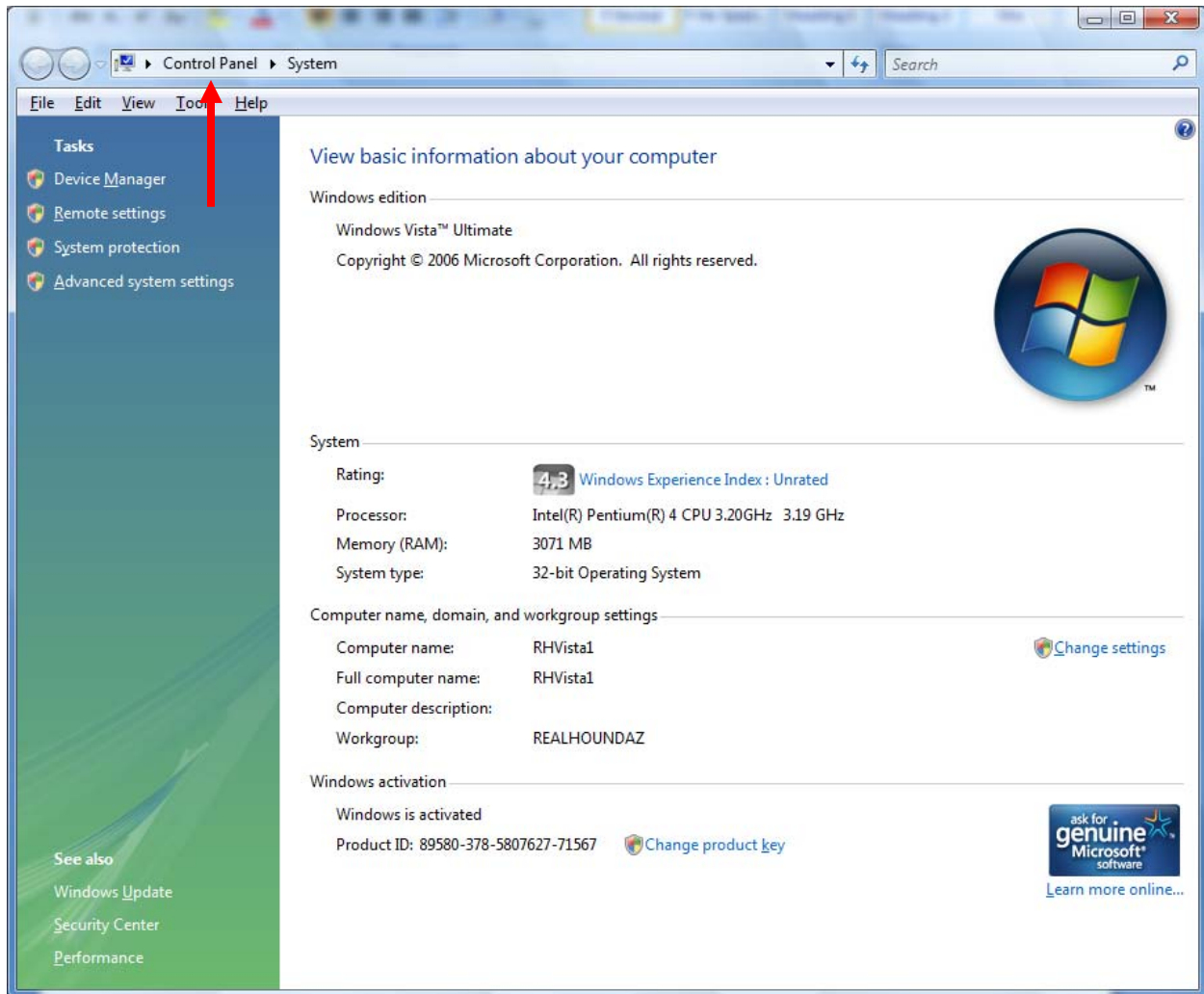
**Step 4** – The Performance Options window will default to Visual Effects Tab, simply click on the “Data Execution Prevention” tab to get to the window below.

**Step 5** – The Data Execution Prevention on your computer will most likely already be set to “Turn on DEP for essential Windows Programs and Services only.” If it is not please set it as shown.



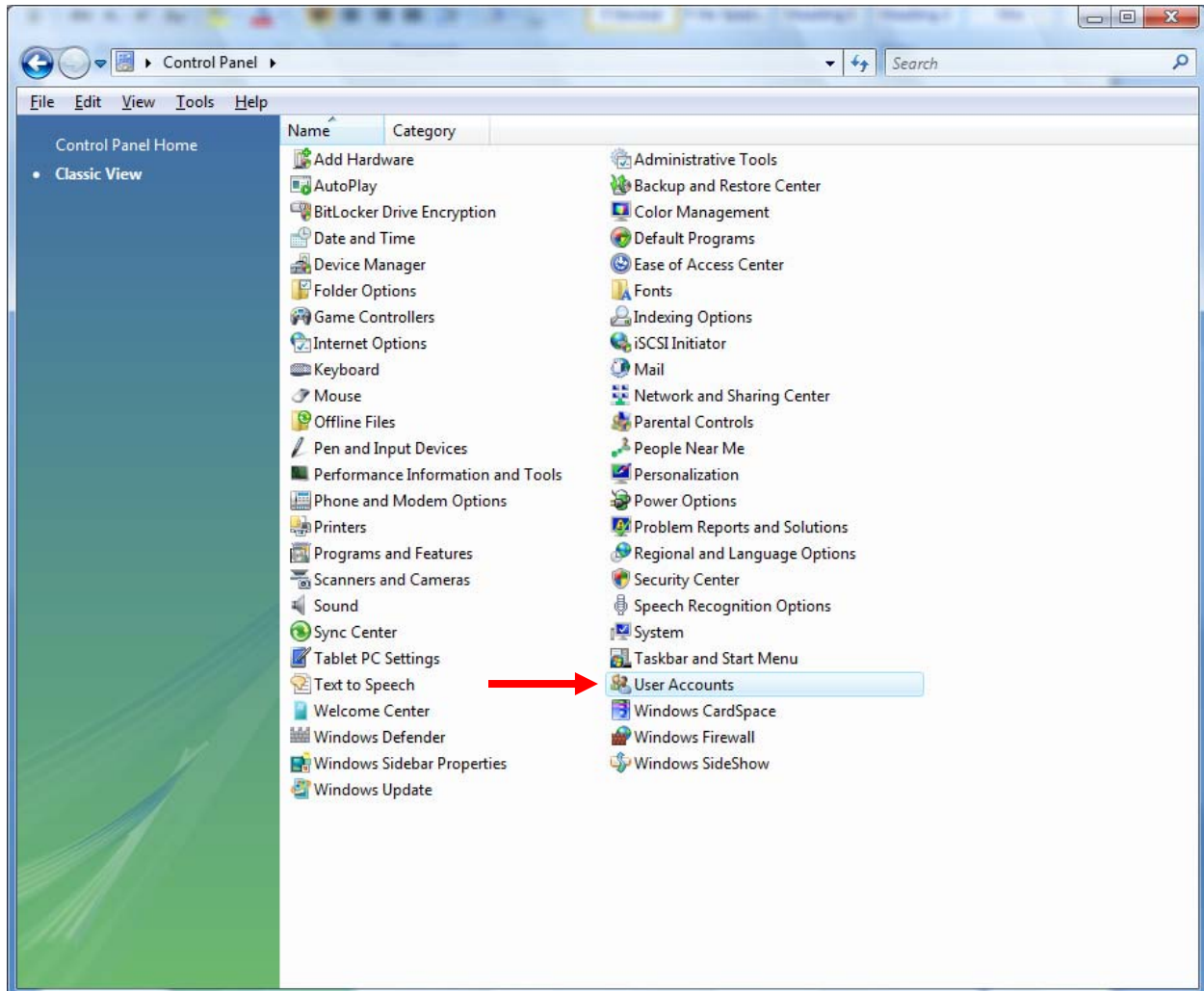
## Part 2: Turn off User Account Control (UAC)

**Step 1** – Now that the DEP is turned on, Click **OK** to close the Performance Options window. Then Click **OK** to close the System Properties window. This will bring you back to your system overview screen as shown below.



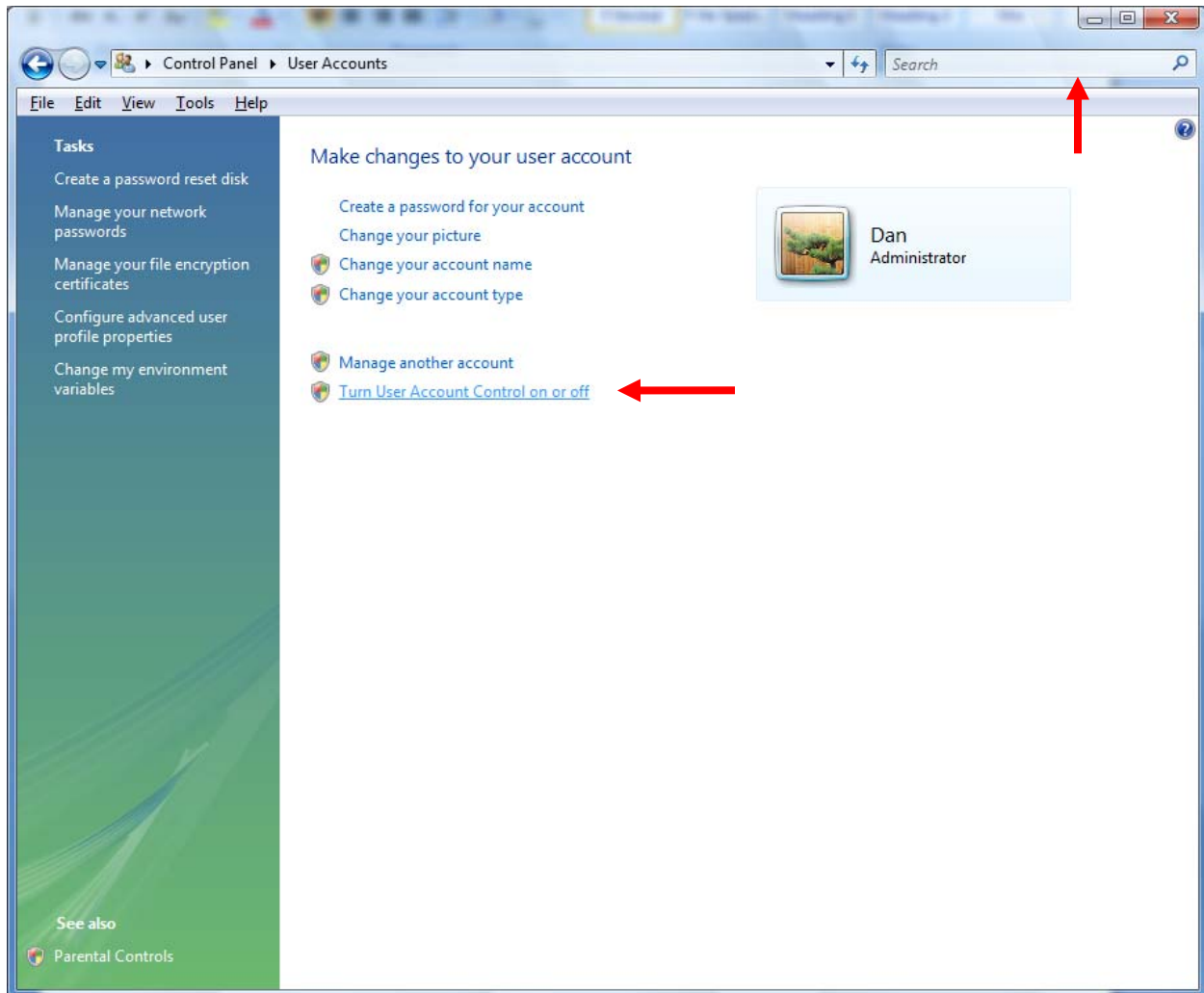
**Step 7** – Click on words “Control Panel” in the address bar. As shown above. This will bring you back to the Control Panel.

**Step 8** –On the control panel double-click on “User Accounts.” This will open the User Accounts window.

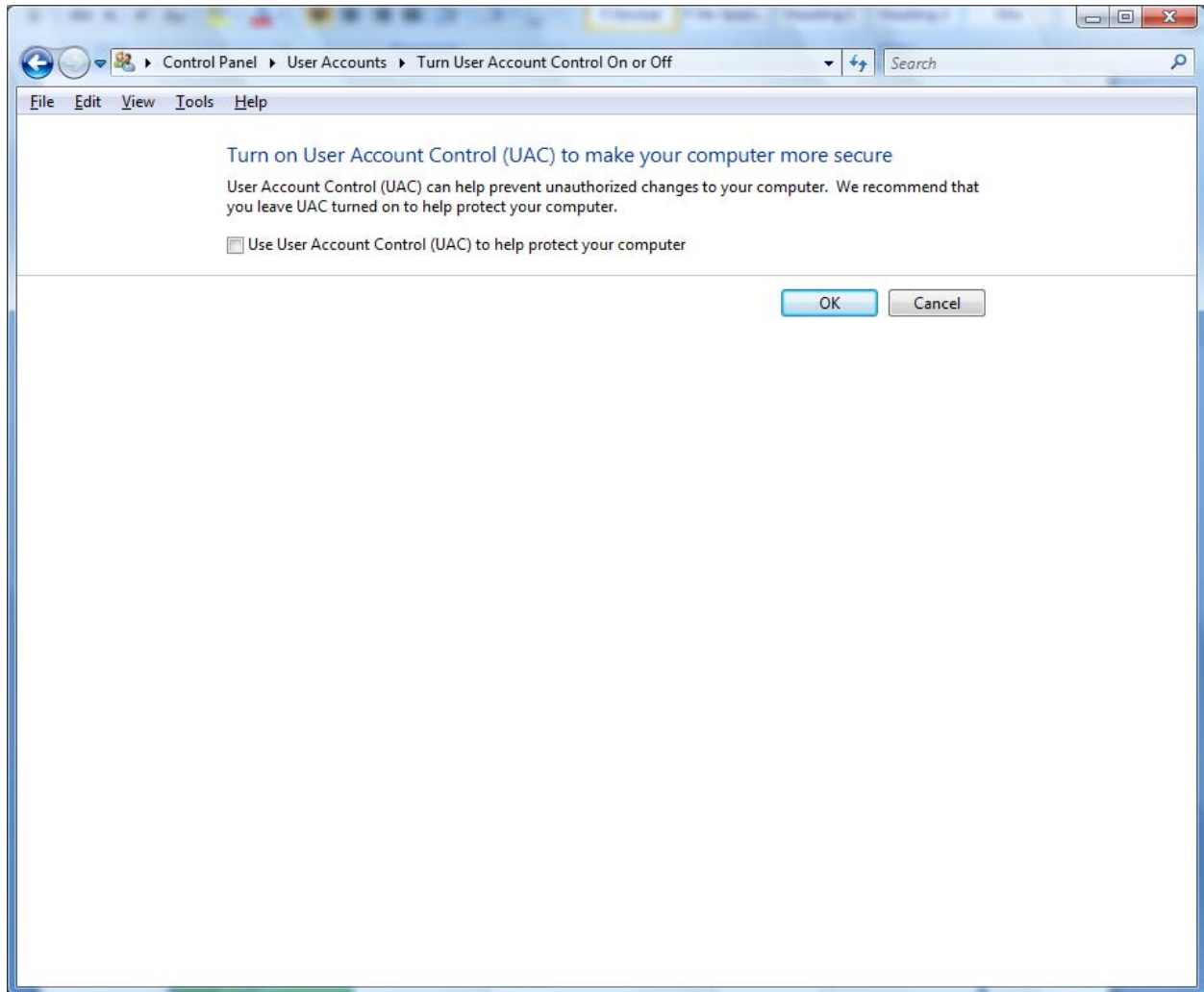


Since this document was created using a computer running Windows Vista Ultimate it may be different than what you may be seeing.

**Step 9** – If your screen looks like below click on the link for “Turn User Account Control on or off.” If your screen looks different please type in the search field “UAC”. As you type this your screen will change and the selection for “Turn User Account Control on or off” should appear. Then you can click on this option.



**Step 10** – Now that you have the User Account Control up we need to make sure it is turned off. Uncheck the box and click on OK. These changes will not take effect until you have rebooted your computer. Vista will prompt you with a message informing you of this. Restart your computer and you can now continue to use the program.



### **Part 3: Disable autotuning with Internet Explorer 7 on Vista to improve networking functionality**

Microsoft Knowledge Base article 929868 describes a problem which will cause you to experience very slow browsing on certain websites when using Internet Explorer 7 on Windows Vista, and eventually the website might even drop the data completely.

It seems that disabling the autotuning feature will speed up threaded network downloads, mostly used with various downloading agents and peer-to-peer networking, along with great improvement with file copying on your network.

It also seems that disabling the autotuning of TCP can also fix other Vista-specific issues related to slow file transfer and even Outlook 2007 connections. Please read "[Outlook 2007 is not for me, performance way too slow](#)" for more information.

To work around this issue you can disable autotuning with the following steps:

1. Click Start and type CMD.
2. Press CTRL+SHIFT+ENTER to open the command Prompt with Administrative rights.
3. At the prompt in the Administrator: Command Prompt window, type the following command, and then press ENTER: `netsh int tcp set global autotuninglevel=disable`

Remember to reboot in order for the setting to take effect.

You can easily restore the setting back to the default by typing:  
`netsh interface tcp set global autotuninglevel=normal`

To read more about the netsh command in Windows Vista please use Vista's help and support tool.